

TYPE - I

GROUND FLOOR PLAN



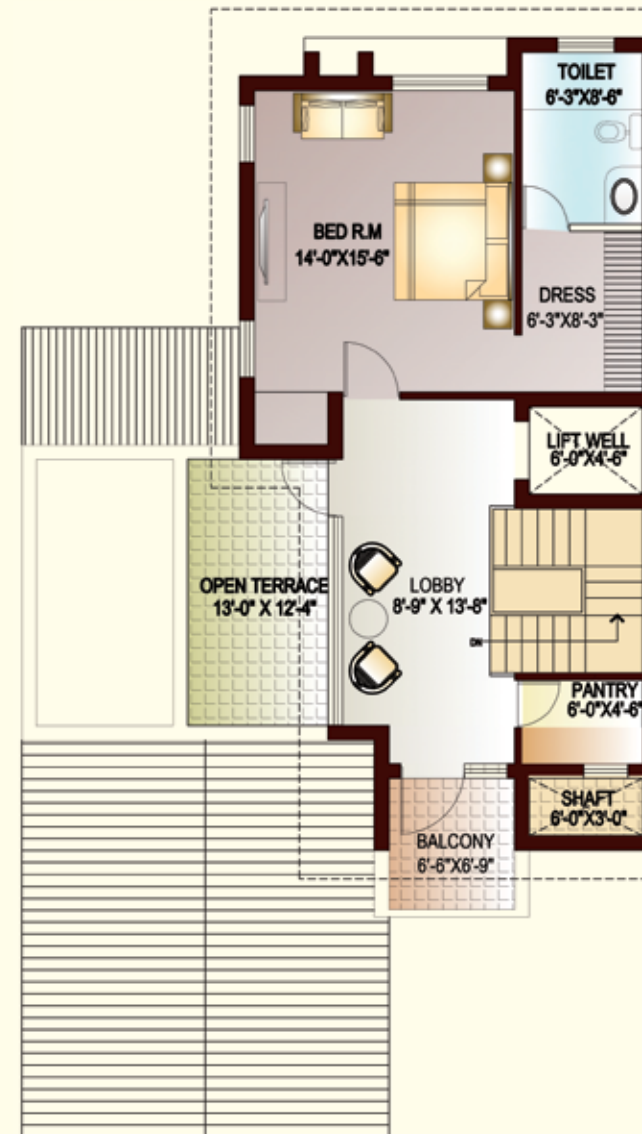
Total Unit Area - 357.68 sq.mt. (3850 sq.ft.)

TYPE - I

FIRST FLOOR PLAN



SECOND FLOOR PLAN



TYPE - II

UPPER GROUND FLOOR PLAN



LOWER GROUND FLOOR PLAN



Total Unit Area - 422.70 sq.mt. (4550 sq.ft.)

TYPE - II

FIRST FLOOR PLAN



SECOND FLOOR PLAN



TYPE - III

GROUND FLOOR PLAN



Total Unit Area - 436.64 sq.mt (4700 sq.ft.)

TYPE - III

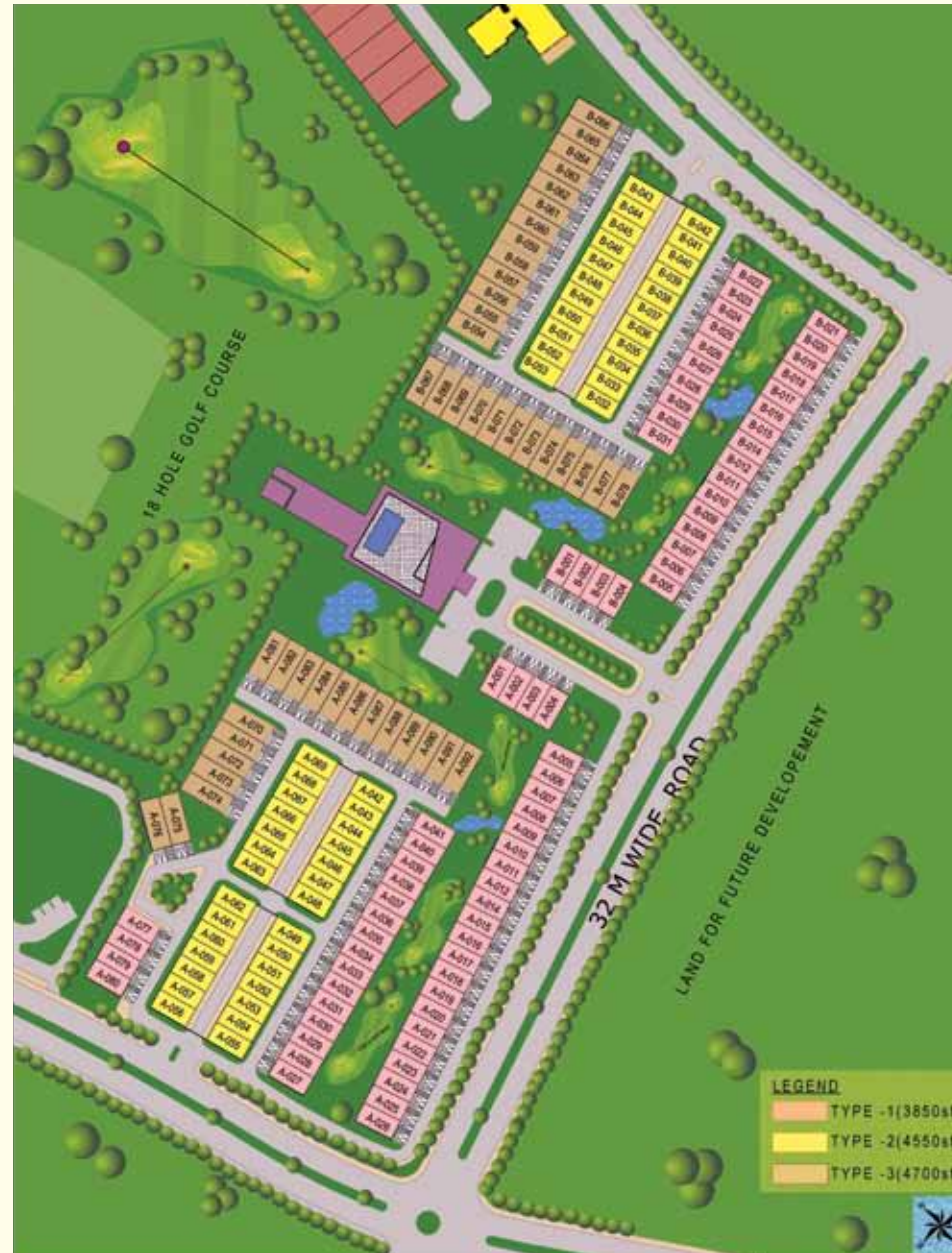
FIRST FLOOR PLAN



SECOND FLOOR PLAN



LAYOUT PLAN



MASTER PLAN

